

Physics Program in Faculty of Pure and Applied Sciences



Chairs of Physics Program : Prof. Akira Ozawa
Academic committee: Prof. Susumu Okada

- Research fields and group composition
- Career path support
- Entrance examination schedule
- Information session

Physics Program in Faculty of Pure and Applied Sciences

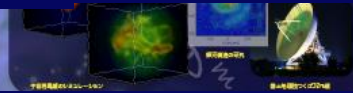
Particle physics Theory · Experiment



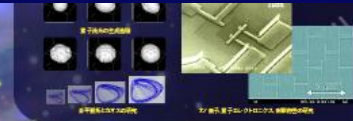
Nuclear Physics
Theory · Experiment



Astrophysics
Theory · Observation



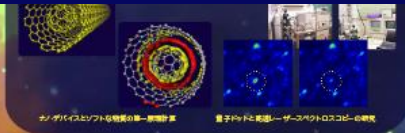
Condensed-matter
Theory · Experiment



Plasma physics



Computational biophysics



$$E=mc^2$$

From elementary particles and the fine structure of space-time to the global structure and evolution of the universe

Elucidation of the dominant principle of the material world and development of advanced devices-Nano and super world-

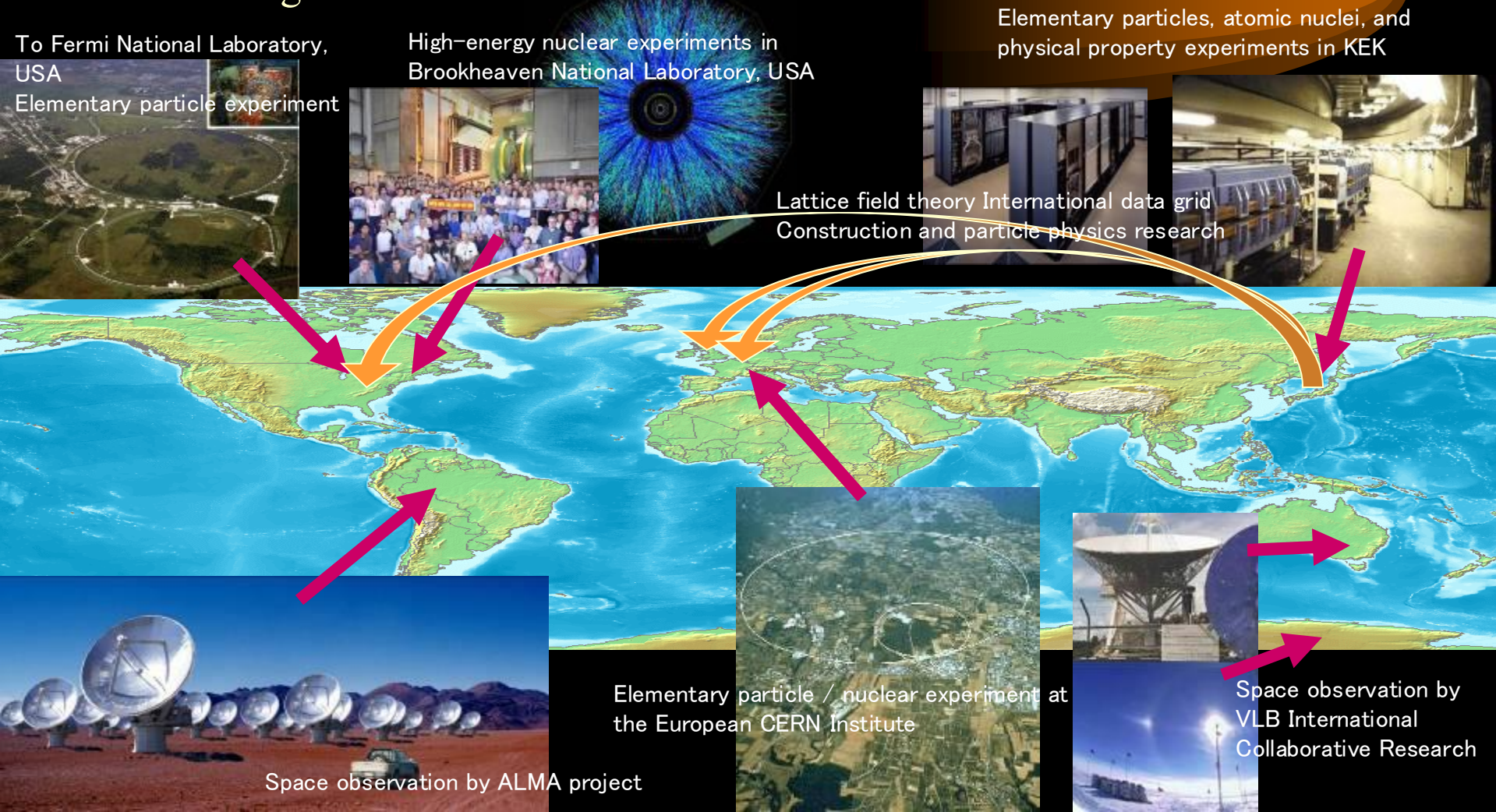
Research group

- Particle physics, Theory
- Theoretical Astrophysics
- Theoretical Nuclear physics
- Theoretical condensed matter physics
- Computational biophysics
- Particle physics, Experiment
- Observational Astrophysics
- Experimental Nuclear physics
- Experimental condensed matter physics
- Plasma

International collaboration of physics research

"Space History Integrated Education Course": Newly established in 2007.

At an advanced international research center, we carry out integrated education on space history that integrates elementary particles, atomic nuclei, and the universe while utilizing state-of-the-art research facilities.



Career path support

From the last year, exemption from special tuition fees for master course students has been started.

Advancing to the doctor course is supported.

In the doctor course, you will get the following support:

- Suuri Fellowship Project and Support for Pioneering Research Initiated by the Next Generation provide the same level of assistance as Gakushin DC. (In each case, recruitment for the next year will be made at the end of the fiscal year. For details, see the website of Faculty of Pure and Applied Sciences.)
- In the doctor course of Faculty of Pure and Applied Sciences, we will commission research assistants (RA) and provide rewards. (Not applicable to Suuri Fellowship Project, Gakushin DC students, etc.)

Student recruitment / Entrance examination schedule

- Master course

- August entrance exam: August 20 and 21
- February entrance exam: January 27 and 28, 2025

(Implemented in some cases: Please check the application guidelines to be released in November for the fields to be implemented.)

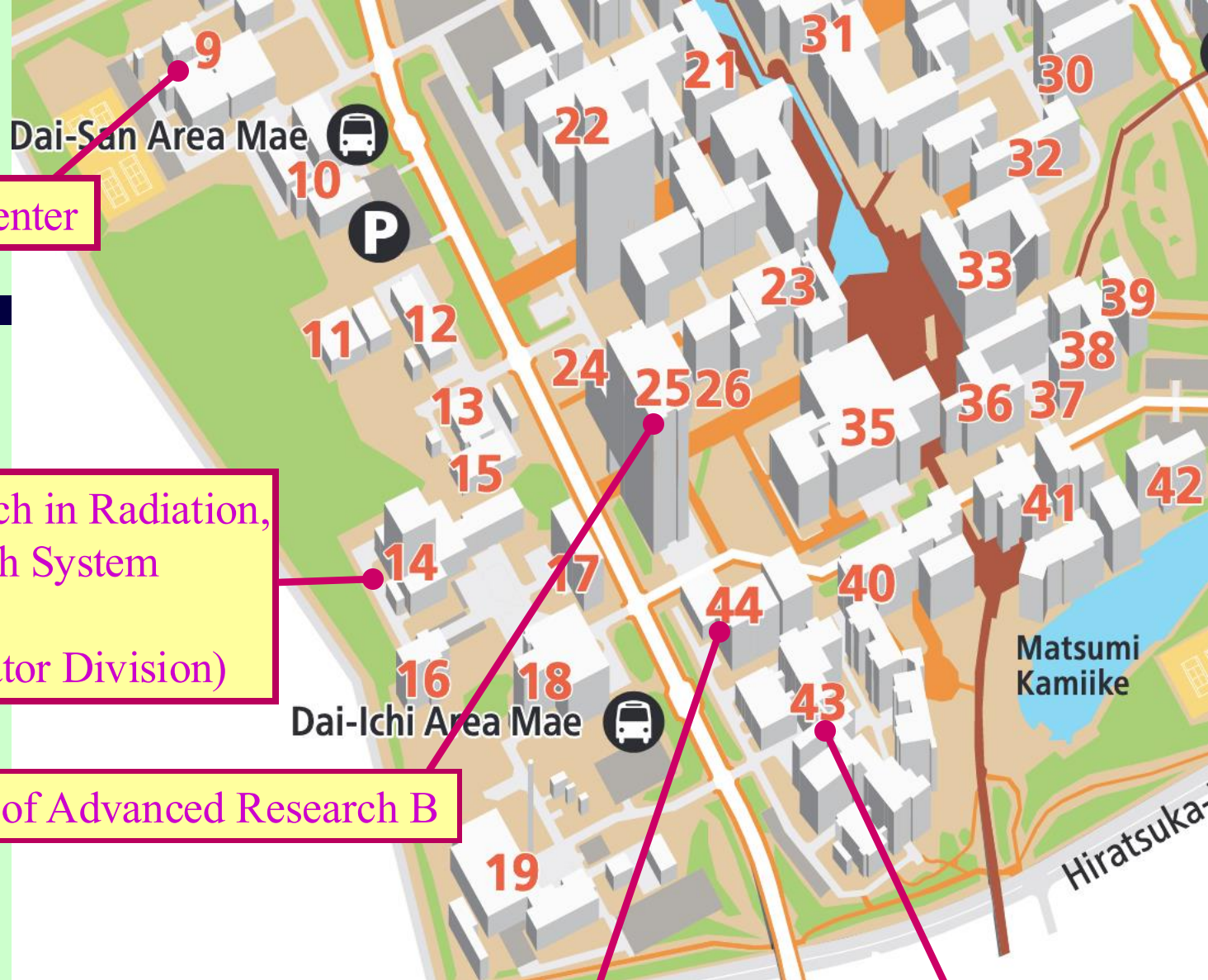
- Doctor course

- July entrance exam: July 7 (October admission)
- August entrance exam: August 22
- February entrance exam: January 28, 2025

Past entrance exam questions (master course) are available on the following web-page.

<https://grad.physics.tsukuba.ac.jp/admission/?lang=en/>

- ② **Information sessions will be held for each research group.**
- ② **Information session schedule: Scheduled to be conducted by each research group in May.**
(We will contact you after the application deadline regarding the implementation method of each group's session)



Plasma Research Center

Center for Research in Radiation,
Isotopes, and Earth System
Sciences
(Applied Accelerator Division)


Laboratory of Advanced Research B

Institutes of Natural Sciences

Center for Computational Sciences

Reference: Campus map
Physics program related

This is the end of the explanation of the physics program.



- Please apply for the information session by each research group.
- If you would like to hear more individually, please contact the faculty member directly or contact us at the email address below.

kyomu@physics.px.tsukuba.ac.jp

- Physics program web page

<https://grad.physics.tsukuba.ac.jp/?lang=en>